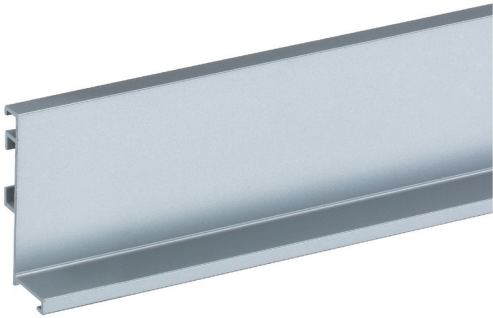


Handle-Free Cabinet Hardware CS3



Item 33914

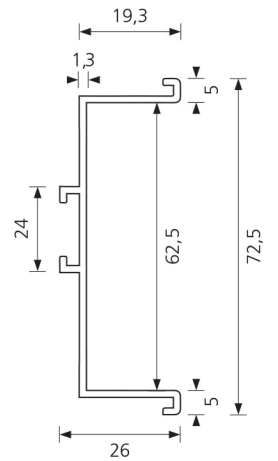
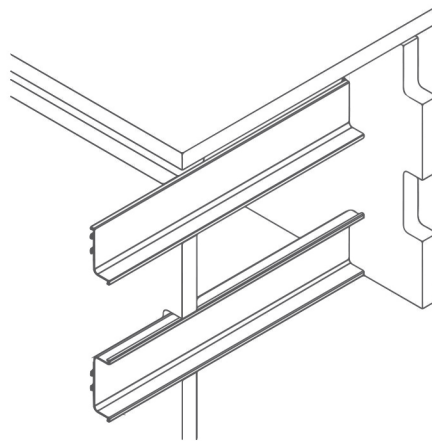
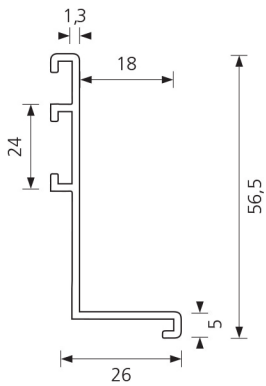


L-channel for horizontal installation between counter top and drawers or doors below.

Item 33913



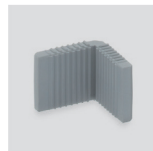
C-channel for horizontal installation between two rows of doors or drawers.



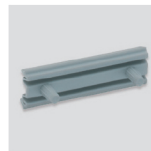
Components



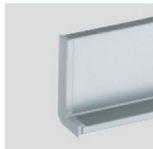
6K136 corner bracket



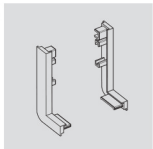
6K350 90 degree connector



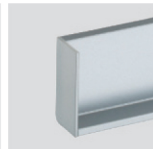
6K351 straight bracket



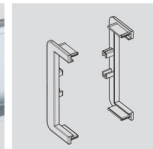
6K376 L cap (L+R)



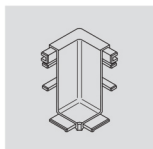
6K377 L cap rectangle (L+R)



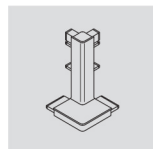
6K379 C cap (L+R)



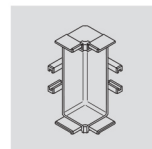
6K378 C cap rectangle (L+R)



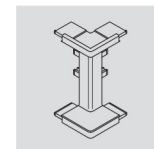
6K399-L inner corner



6K400-L outer corner



6K399-C inner corner



6K400-C outer corner

Item 33916

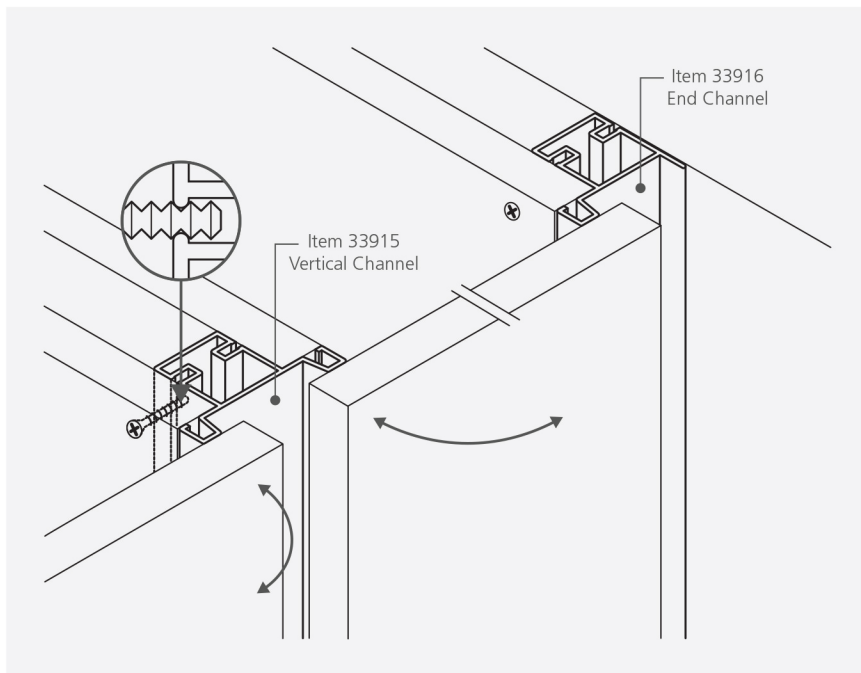
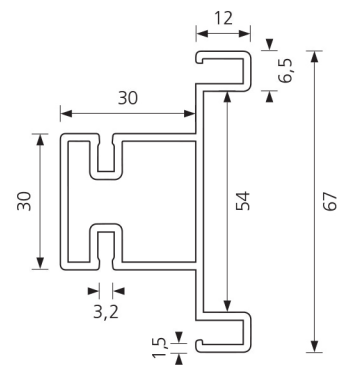
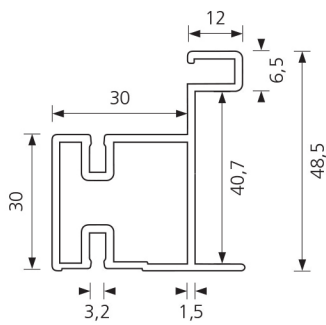


Item 33915



End channel for vertical installation between a cabinet side panel and a wall. For left and right handed installation.

Channel for vertical installation between two cabinets. Structural channel fastened to the cabinet side panels.



Aluminum Channels

Aluminum channels from Schwinn come with an extensive range of components to provide the most practical solutions for a minimalist architectural design.

The understated appearance is complemented by different anodized and powder-coated finishes.

Horizontally installed between counter top and drawers or doors, as well as vertically installed, these channels show their true strength in any application in kitchens, living rooms or offices.