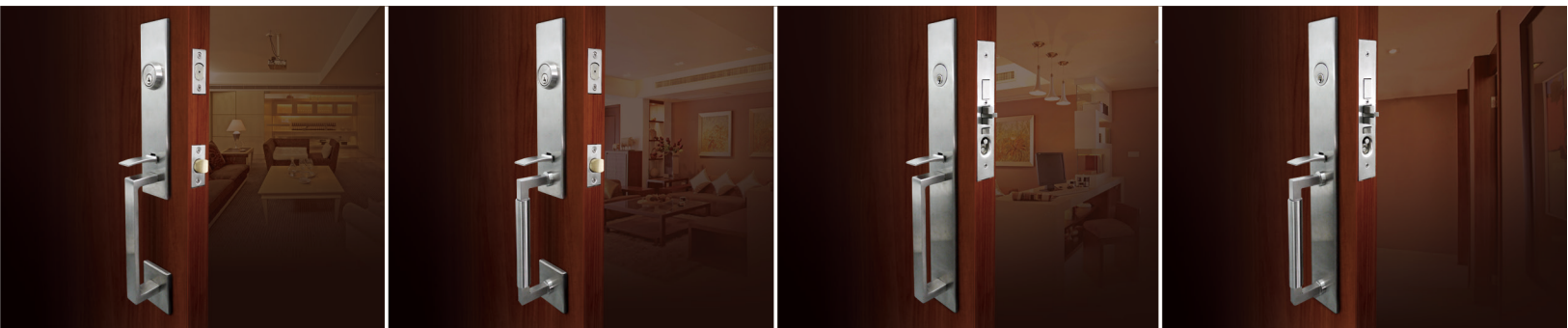




TUBULAR & MORTISE Entrance Handle Sets



(Version: 2015.6)

NY/MH/ME/BW TRIM





TABLE OF CONTENTS

How to order..... Page 1

Escutcheons Plates Page 2

Lever Designs and Finishes (For Inside Handle Set)..... Page 3

Tubular Handle Set Page 4

Mortise Handle Set Page 7

MT Mortise Lockcase Page 8

Exploded Diagram..... Page 10

Care and Maintenance..... Page 11

Product Warranty..... Page 12

Disclaimer: All information in this catalog has been deemed accurate as of the date of printing. We are continuously improving and expanding our line in an effort to offer our clients the finest quality products and services. Therefore, Unison Hardware, Inc. reserves the right to alter this information or correct printing errors at any time.

HOW TO ORDER:

For leversets with exterior handgrip escutcheon and interior lever with the same finish:

Product Identification
NY 221 MT620-32D-RH

Handing*:

RH – Right Hand
 LH – Left Hand
 RHR – Right Hand Reverse
 LHR – Left Hand Reverse
 *Specify for Entrance and Entry Dummy Functions

Finish:

32D = Satin Stainless Steel
 32 = Polished Stainless Steel
 SP = Two Tone Satin and Polished Stainless Steel (Inside Lever Only)
 10B = Oil Rubbed Bronze on Stainless Steel

Function:

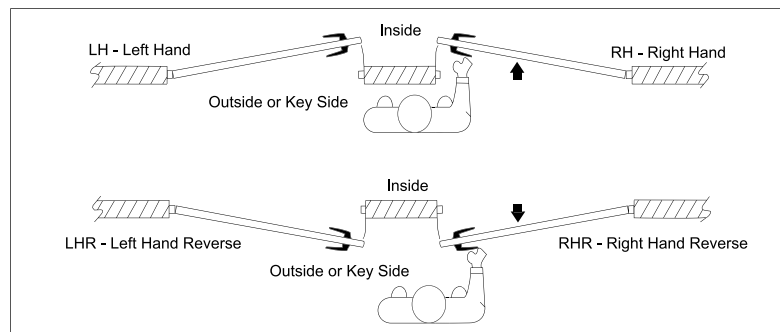
Tubular Latch and Deadbolt Combo
 C563 = Tubular Entry Handle Set with TL5, 2-3/8" Backset
 C573 = Tubular Entry Handle Set with TL5, 2-3/4" Backset
 TDP = Tubular Entry Dummy Set with Dummy Cylinder

Lever:

101 Cologne
 102 Munich
 103 Oslo
 104 Brussels
 105 Frankfurt
 106 Copenhagen
 107 Stockholm
 108 Vienna
 109 Stuttgart
 210 Air-stream
 211 Breeze
 213 Cabernet
 214 Champagne
 217 Horizon
 221 Aurora
 223 Phoenix
 225 Waterfall
 226 Summer
 227 Stratus
 243 Sunrise
 244 Twilight
 251 Sequoia
 311 Crest
 344 Ecco
 345 Tokyo
 346 Osaka
 351 Toronto
 380 Polaris

NY Plate
 MH Plate
 ME Plate
 BW Plate

* All Entrance
 Handle Sets use
 SF Plate on the
 inside



Tubular Escutcheons Plates

[Outside Plate]

[Inside Plate]



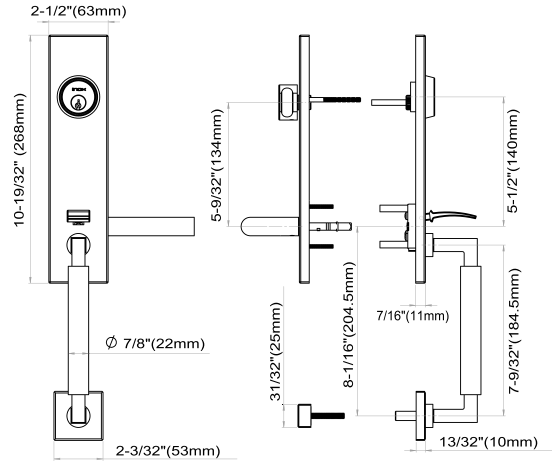
NY Plate



MH Plate



SF Plate



Mortise Escutcheons Plates

[Outside Plate]

[Inside Plate]



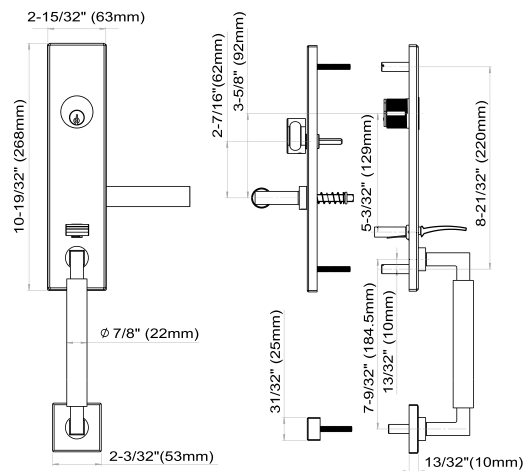
NY Plate



MH Plate



SF Plate



[Outside Plate]

[Inside Plate]



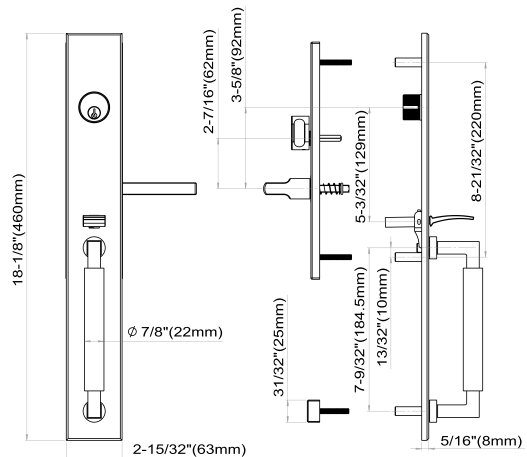
ME Plate



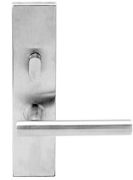
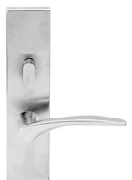
BW Plate



SF Plate



Lever Designs and Finishes (For Inside Handle Set)

**101 Cologne**
(32, 32D)**103 Oslo**
(32, 32D)**104 Brussels**
(32, 32D)**105 Frankfurt**
(32, 32D, 10B)**106 Copenhagen**
(32, 32D, 10B)**107 Stockholm**
(32, 32D)**108 Vienna**
(SP*)**213 Cabernet**
(32, 32D)**226 Summer**
(32, 32D)**210 Air-Stream**
(32, 32D, 10B)**211 Breeze**
(32, 32D, 10B)**214 Champagne**
(32, 32D, 10B)**217 Horizon**
(32, 32D)**221 Aurora**
(32, 32D, SP, 10B)**223 Phoenix**
(32D, SP*)**225 Waterfall**
(32, 32D)**227 Stratus**
(32, 32D)**243 Sunrise**
(32, 32D, 10B)**251 Sequoia**
(32D, 32, SP*)**311 Crest**
(32, 32D, 10B)**344 Ecco**
(32, 32D)**345 Tokyo**
(32, 32D)**351 Toronto**
(32, 32D)**380 Polaris**
(32, 32D)

Lever Designs with "Return To Door" (RTD)*

*Compliant with California Fire Code

**102 Munich**
(32, 32D)**109 Stuttgart**
(32, 32D)**244 Twilight**
(32, 32D)**346 Osaka**
(32, 32D)

*SP is a two-tone stainless steel finish: satin (32D) finish on lever grip, polished (32) finish on lever neck and roses.

Tubular Handle Set



New York (NY Tubular Series)



Manhattan (MH Tubular Series)

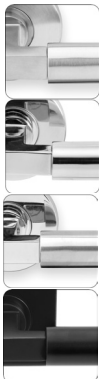
Application

For residential entry,
multi-family unit entry.

Material

Stainless Steel Levers and Escutcheons

Finish



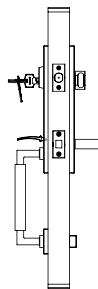
- Satin Stainless Steel
US32D/630
- Bright Polished Stainless Steel
US32/629
- Two-tone Stainless Steel (Inside Lever Only)
SP (Satin on lever grip, Polish on lever neck,
inside plate, outside plate and handgrip.)
- Oil Rubbed Bronze on Stainless Steel
10B/613

*See page 3 for finish availability.

Specification

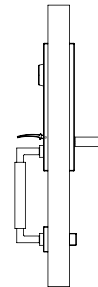
- Door Thickness: 1-3/4" (44mm) standard
Thick Door Kits available
- Backset: 2-3/8" (60mm) standard
2-3/4" (70mm) optional
- Hanging: Hanging specification required.
Latchbolt is field reversible.
- Center Distance: Lever to Cylinder 5-1/2" (140mm)
- Cylinder & Keys: 5-pin Schlage C keyway with 2 keys.
- Leverset Thru-bolts: 2 EA M4x35mm
- Deadbolt Thru-bolts: 2 EA M5x50mm

Functions



Entrance (C563/C573)

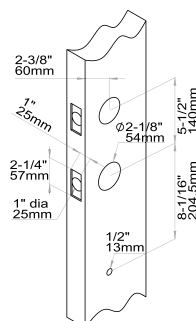
Deadbolt is locked or unlocked by key or thumb-turn inside.
Thumb-piece from outside or lever from inside retract latchbolt.
Deadbolt and latch are not interconnected.



Entry Dummy (TDP)

NY/ MH trim with rim dummy cylinder outside,
dummy plate escutcheons inside.

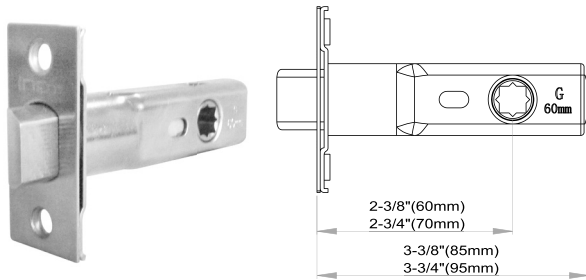
Door Preparation



Please go to:
www.inoxproducts.com/resources
for the latest door preparation
templates and installation instructions.

Tubular Handle Set

Tubular Latch



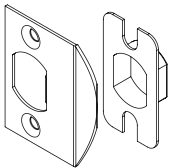
TL5 – Residential Grade
 35 Degree Latch Retraction
 Backset: 2-3/8" (60mm), 2-3/4" (70mm)
 Function: Passage (For Tubular Handle Sets Only)
 Faceplate: 1" x 2-1/4"

Backset	Function	Item No.
2-3/8" (60mm)	Passage	TL561
2-3/4" (70mm)	Passage	TL571

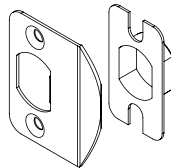
Strikes

All latches come with both T-Strike and Full-lip Strike with square corners. Full-lip Strike with Radius Corner and ASA Strike can be ordered separately.

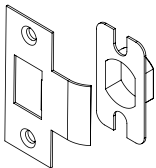
Full-lip Strike
 LSR-D1
 1-3/4"x2-1/4"



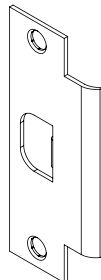
Full-lip Strike 1/4" Corner
 LSR-D14
 1-3/4"x2-1/4"



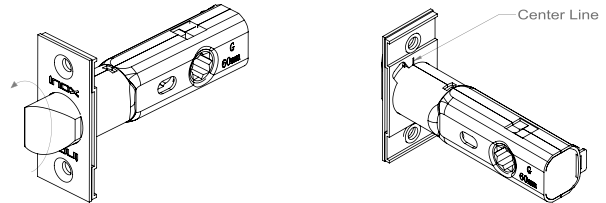
T-Strike
 LSR-T1
 1-1/8" x 2-3/4"
 w/lip 1-1/2" x 1/2"



ASA Strike (ANSI Standard)
 LSR-ASA
 1-1/4" x 4-7/8"



Change Latch Bolt Direction For TL5 Latch

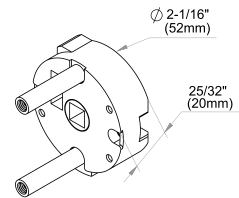


Change the latch direction 180° with the faceplate together.
 Note: Be sure to install the latch with faceplate attached to the latch body.

Note: Please ensure the center line on the back of the faceplate meets the center seam of the latch case.

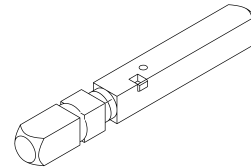
Gear Drive

Slim Gear Drive design fits perfectly in INOX Entrance Handleset Escutcheons.



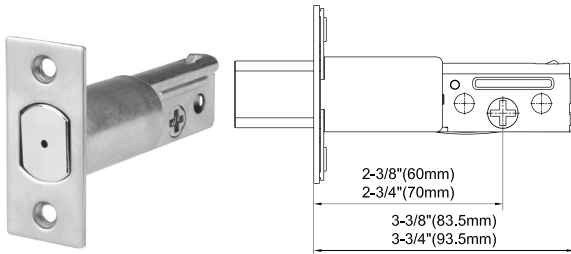
Spindle for Tubular Latch TL5 and Gear Drive

FC-SW8875



Tubular Handle Set

Deadbolt

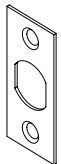


Backset: 2-3/8" (60mm), 2-3/4" (70mm)
 Deadbolt: 1" (25mm) throw with anti-drill pin
 Function: Suitable for entry door or doors needing to be locked
 Faceplate: 2-1/4" x 1"
 Cylinder & Keys: 5-pin Schlage C keyway cylinder with 2 keys

Backset	Item No.
2-3/8"	BT160
2-3/4"	BT170

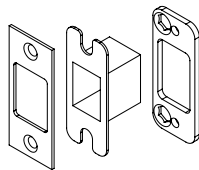
Deadbolt Strike and Faceplate

Deadbolt Faceplate



BT1-FSP

Deadbolt Strike w/
reinforcement plate
and dustbox

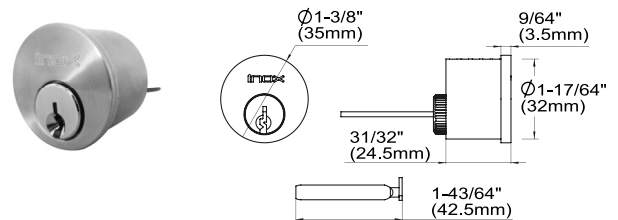


LSR-BT1

Rim Cylinders

Schlage C Keyway, 5 Pin, with Tailpiece, 2 Keys.
 Standard Keyed Different (KD).
 Other Keying Services Available.

Single Cylinder CRB105



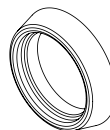
Dummy Cylinder CRA10D



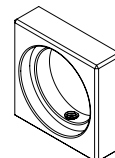
Thumb-turn TT-04C



Cylinder Escutcheon EC-R460COL



EC-S420COL



Mortise Handle Set



New York (NY Mortise Series)



Manhattan (MH Mortise Series)



Metropolis (ME Mortise Series)



Broadway (BW Mortise Series)

Application

For residential entry, multi-family unit entry.

Material

Stainless Steel Levers and Escutcheons

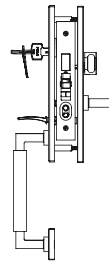
Finish

- Satin Stainless Steel
US32D/630
- Bright Polished Stainless Steel
US32/629
- Two-tone Stainless Steel
SP (Satin on Lever Grip;
Polished on Lever Neck and Roses)
- Oil Rubbed Bronze on Stainless Steel
10B/613

*See page 3 for finish availability.

Specification

- Door Thickness: 1-3/4" (44mm) standard.
Thick Door Kits available.
- Backset: MT620: 2-1/2" (63.5mm) Standard.
MT720: 2-3/4" (70mm) Optional.
- Handing: Handing specification required.
- Lock case are field reversible without disassembly.
- Center Distance: Lever to Cylinder 3-5/8" (92mm)
Lever to Thumb-turn 2-7/16" (62mm)
- Cylinder & Keys: 6-pin Schlage C Keyway Cylinder with 2 keys.
Standard Cylinder Size for 1-3/4" Door:
NY and MH Trim: 1-1/4" Mortise Cylinder
ME and BW Trim: 1-1/8" Mortise Cylinder
- Keying service available.

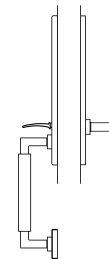
Functions**Entrance (MT620/MT720)**

Key from outside lock and unlock deadbolt.
Thumb-piece from outside retract latchbolt.
Thumb-turn from inside locks and unlocks
deadbolt. Lever from inside is always
unlocked.

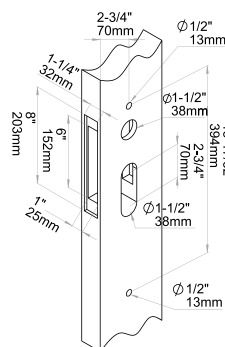
Inside lever is always unlocked allowing
emergency egress.

Toggle always in locked position unless set
to unlock manually.

Locking deadbolt by thumb-turn or key to
reset toggle to locked position.

**Entry Dummy (MTEDP)**

NY/MH/ME/BW trim with dummy cylinder
outside, dummy plate escutcheons inside.

Door Preparation

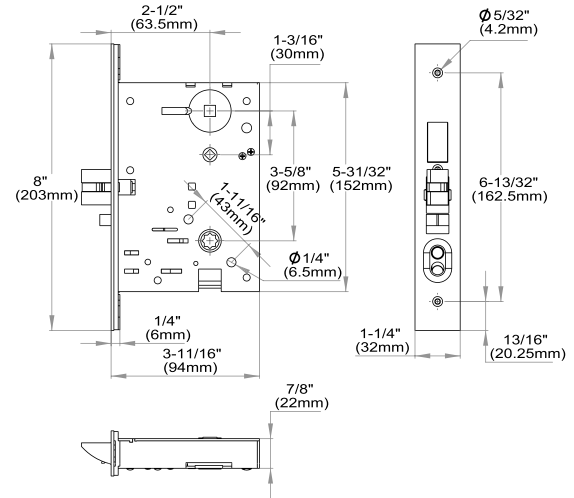
Please go to:

www.inoxproducts.com/resources
for the latest door preparation
templates and installation
instructions.

MT Mortise Lockcase



Lockcase Dimensions



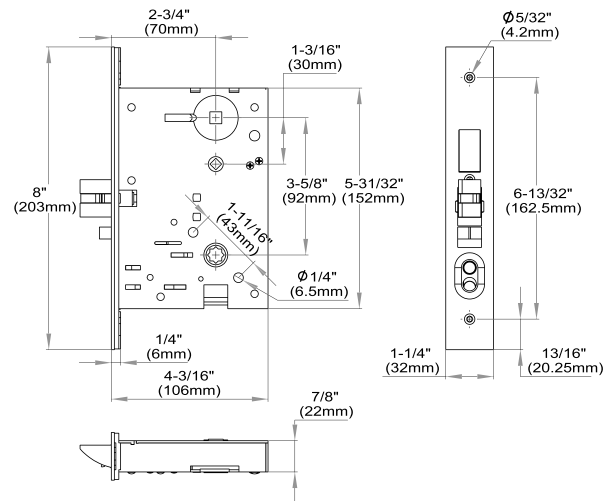
MT620 Mortise Lock Dimensions

MT Mortise Lockcase

For all Mortise Handle Sets only
w/faceplate, strike and dustbox (less cylinder)

Illustration	Backset	Function	Item Code
	2-1/2"	Entry w/ Toggle	MT620-32D/32/10B
	2-3/4"	Entry w/ Toggle	MT720-32D/32/10B

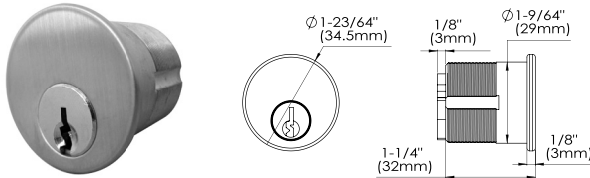
* MT Lock built-in toggle buttons are set to be locked by default, which deactivates the outside thumb-piece. This allows door to be kept locked even without using key or thumb-turn to engage deadbolt. Toggle can be manually set to unlocked position, in which case the outside thumb-piece will engage the latch bolt and act as a passage latch until the toggle is reset to locked position, either manually or set automatically by using thumb-turn or key.



MT720 Mortise Lock Dimensions

MT Mortise Faceplate and Strike

Illustration	Function	Item Code
	MT Mortise Faceplate	MT-FSP20-32D/32/10B
	MT Mortise Strike	LSR-MT01-32D/32/10B
	MT Mortise Strike Dust Box	LSR-DBX-MT

Mortise Cylinders and Keys

Schlage C Keyway, 6 Pin, with Clover Cam, 2 Keys. Standard Keyed Differ (KD). Other Keying Service available.

Standard Cylinder Size for 1-3/4" Door:

NY and MH Trim: 1-1/4" Mortise Cylinder

ME and BW Trim: 1-1/8" Mortise Cylinder

Please refer to Price Book for details of Thick Door Kits (TDK)

Product Illustration	Description	Item No.
	1-1/8" Mortise cylinder with MT cam	CMB1186 CAM04-MT
	1-1/4" Mortise cylinder with MT cam	CMB1146 CAM04-MT
	1-3/8" Mortise cylinder with MT cam	CMB1386 CAM04-MT
	1-1/2" Mortise cylinder with MT cam	CMB1126 CAM04-MT
	1-5/8" Mortise cylinder with MT cam	CMB1586 CAM04-MT
	1-3/4" Mortise cylinder with MT cam	CMB1346 CAM04-MT
	Key blanks Schlage C Keyway 6 pin for Mortise Cylinder	LSK01-6SC-NP

CAM

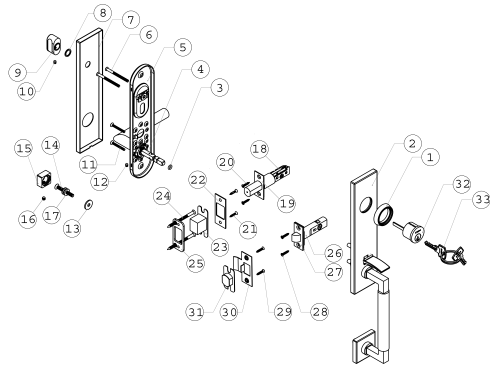
MT Cam
CAM04-MT

Keying Services

Description	Item No.
Service: Key Cut including Key Blank	SV-KYCT
Service: Keyed Alike (KA)	SV-KA
Service: Keyed to Specific Code	SV-KS
Service: Master Keying	SV-MK
Service: Grand Master Keying with 2 or more Master groups.	SV-GMK
Service: Construction Master Keying Service	SV-CMK

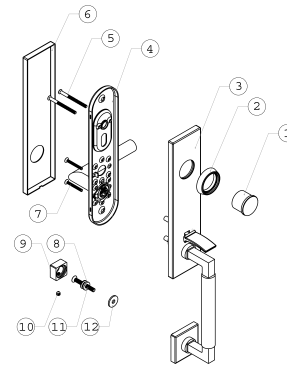
Exploded Diagrams

Exploded Diagram (NY Tubular Entrance)



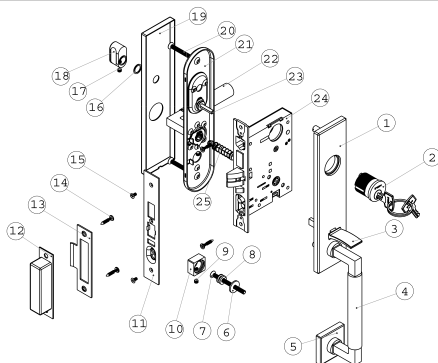
- | | |
|-------------------------------|-----------------------------------------|
| 1. Cylinder Escutcheon | 18. Deadbolt |
| 2. Outside Plate | 19. Deadbolt Faceplate |
| 3. Rubber Ring | 20. Deadbolt Faceplate Screws |
| 4. Tubular Spindle 8mm Square | 21. Deadbolt Strike Screw |
| 5. Inside Sub-plate | 22. Deadbolt Strike |
| 6. Thru-bolt for Cylinder | 23. Deadbolt Dust Box |
| 7. Inside Cover Plate | 24. Deadbolt Reinforcement Plate Screws |
| 8. Thumb-turn Washer | 25. Deadbolt Reinforcement |
| 9. Thumb-turn | 26. Tubular Latch |
| 10. Thumb-turn Set Screw | 27. Tubular Latch Faceplate |
| 11. Thru-bolt for Sub-plate | 28. Tubular Latch Faceplate Screws |
| 12. Set Screw for Lever | 29. Tubular Latch Strike Screw |
| 13. Thru-bolt Washer | 30. Tubular Latch Strike |
| 14. Handgrip Thru-bolt | 31. Tubular Latch Dust Box |
| 15. Thru-bolt Cap | 32. Rim Cylinder |
| 16. Thru-bolt Cap Set Screw | 33. Keys |
| 17. Thru-bolt Adaptor | |

Exploded Diagram (NY Tubular Entry Dummy)



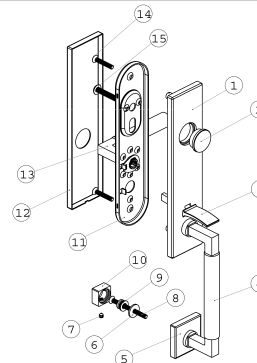
- | |
|---------------------------------|
| 1. Rim Dummy Cylinder |
| 2. Cylinder Escutcheon |
| 3. Outside Plate |
| 4. Inside Sub-plate |
| 5. Thru-bolt for Dummy Cylinder |
| 6. Inside Cover Plate |
| 7. Thru-bolt for Sub-plate |
| 8. Thru-bolt Adaptor |
| 9. Thru-bolt Cap |
| 10. Thru-bolt Cap Set Screw |
| 11. Handgrip Thru-bolt |
| 12. Thru-bolt Washer |

Exploded Diagram (NY Mortise Entrance)



- | | |
|-------------------------------|---------------------------------|
| 1. Outside Plate | 14. Strike Screws |
| 2. Mortise Cylinder | 15. Faceplate Screws |
| 3. Thumb-piece | 16. Thumb-turn Washer |
| 4. Handgrip | 17. Thumb-turn Set Screw |
| 5. Handgrip Lower Escutcheon | 18. Thumb-turn |
| 6. Thru-bolt Washer | 19. Inside Cover Plate |
| 7. Handgrip Thru-bolt | 20. Thru-bolt for Sub-plate |
| 8. Thru-bolt Adaptor | 21. Inside Sub-plate |
| 9. Thru-bolt Cap Set Screws | 22. Inside Lever |
| 10. Thru-bolt Cap | 23. Deadbolt Spindle 5mm Square |
| 11. MT Mortise Lock Faceplate | 24. MT Mortise Lock Case |
| 12. Dust-box | 25. Lever Spindle 8mm Square |
| 13. MT Mortise Lock Strike | |

Exploded Diagram (NY Mortise Entry Dummy)



- | | |
|------------------------------|----------------------------------|
| 1. Outside Plate | 9. Thru-bolt adaptor |
| 2. Dummy Cylinder | 10. Thru-bolt Cap |
| 3. Thumb-piece | 11. Inside Sub-plate |
| 4. Handgrip | 12. Inside Cover Plate |
| 5. Handgrip Lower Escutcheon | 13. Inside Lever |
| 6. Thru-bolt Washer | 14. Thru-bolt for Sub-plate |
| 7. Thru-bolt Cap Set Screw | 15. Thru-bolt for Dummy Cylinder |
| 8. Handgrip Thru-bolt | |

Care and Maintenance

Lever and Knob Handles

On installations where the correct procedures have been carried out per the instructions, the lever handles will not require adjustment. However, all fixings should be checked for tightness annually. Any loose fixings should be adjusted. Badly fitted furniture can cause interference with the operation of the lock and at the same time, damage the surface of the furniture. INOX[®] snap-on rose covers should only be removed using proper tools. A screw driver blade should never be used as this can distort the rose cap out of alignment and scratch the surfaces of both product and door.

Care of Finishes

Today's environment exerts immense pressures on product material requirements. Products must withstand a diversification of atmospheric conditions, such as high pollution, marine locations, and high humidity climates. Additionally, products must be protected against cleaning agents/solutions and ideally the product should offer hypo-allergenic properties.

Stainless Steel

Stainless steel is renowned for the following two properties; resistance to corrosion and low maintenance requirements. Stainless steel corrosion resistance is attributable to the presence of a thin, durable film of passive, but stable, chromium oxide. Being inert, invisible, extremely adherent and self-repairing, this film provides an unrivalled protection for the steel; should the film be damaged or removed it will regenerate independently, provided that oxygen is present to allow the reaction to occur with the chromium content of the steel. Therefore you must ensure regular cleaning and maintenance, to restore the original surface appearance, prevent corrosion and maintain hygienic conditions.

Cleaning Technique

It is important to clean stainless steel regularly.

- Initially, wash down the surface using soapy water or a mild detergent.
- Always thoroughly rinse the cleaning agent away with clean, warm water.
- To complete the cleaning procedure, dry/polish the item with a soft, dry cloth.

Note: Within aggressive conditions, such as offshore, marine and swimming pool environments, it is especially relevant to ensure that cleaning maintenance occurs regularly.

Discoloration

If spots appear on the surface it is not due to the stainless steel, but to impurities in the water, the air or to cleaning agents that have not been thoroughly removed from the surface.

- Spots can be avoided by careful cleaning.
- If discoloration or spots occur they can be removed by using special polishing agents for stainless steel or a light scouring cream.
- Again rinse thoroughly with clean water and polish with a soft, dry cloth.

What to Avoid!

- Scouring powders
- Steel wool
- Strong abrasive materials

Note: Acid based cleaning solutions, except for hydrochloric acid, may be used on AISI 304 stainless steel as long as thoroughly rinsed with clean water afterwards. For further information on stainless steel, please contact your local INOX[®] distributor for the INOX[®] Stainless Steel Technical Details information sheet.

Product Warranty

Limited Lifetime Warranty

Unison Hardware, Inc. warrants that its INOX[®] residential products shall be free from defects in material and workmanship for the life of the product, excluding components made of wood, leather or plastic. This warranty extends to the original purchaser and the first consumer owner only. If a product fails due to defects in material or workmanship during the warranty period we will replace it with the most nearly identical product which we sell at the time or refund the original purchase price. Unison Hardware, Inc. will not be liable for any labor charges or freight costs incurred in connection with repair or replacement of a product. Our sole and maximum liability for defective goods (Sold and manufactured by Unison Hardware, Inc.) shall never exceed the cost of the subject products.

This warranty does not cover:

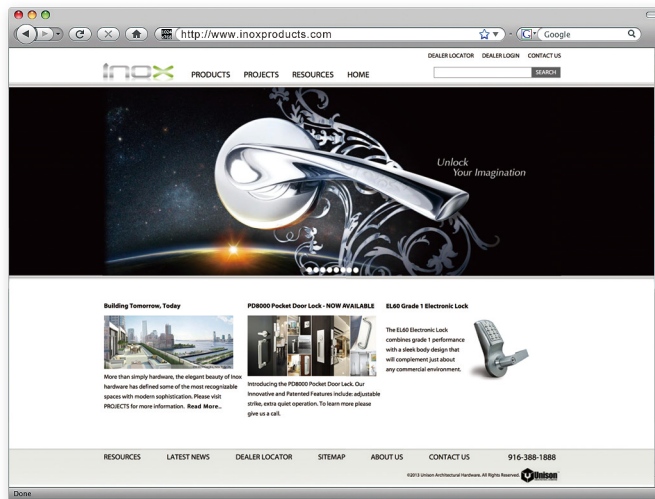
- a. Damage resulting from negligence, misuse, abuse or accident occurring after installation
- b. Damage due to use outside normal architectural requirements
- c. Defects resulting from any modification or improper installations
- d. Improper torquing (tightening) during or after installation
- e. Improper door preparations
- f. Use of residential grade products in commercial applications (i.e. public building, restaurants, offices etc.)
- g. Products installed within three miles of the ocean
- h. Products installed in exterior application and/or exposed to the outdoor weather or elements

Limited Lifetime Finish Warranty

Unison Hardware, Inc. warrants its INOX[®] products made of stainless steel material against tarnishing. This warranty is extended to the original purchaser of INOX[®] products as long as the User occupies the residential premises on which the Products were originally installed. Not covered under this warranty are:

- a. Products which have been scratched or abraded
- b. Products which have been incorrectly installed or mistreated
- c. Products installed within three miles of water (ocean, lakes, rivers, etc.), harsh environments and/or commercial or industrial applications
- d. Products installed in exterior application and/or exposed to the outdoor weather or elements
- e. Finishes which are specifically designed to wear over time (i.e. Oil Rubbed Bronze finish)

UNISON HARDWARE, INC. MAKES NO OTHER WARRANTY, AND ALL IMPLIED WARRANTIES INCLUDING ANY WARRANTY OF MERCHANTABILITY OR FITNESS FOR A PARTICULAR PURPOSE ARE LIMITED TO THE DURATION OF THE EXPRESSED WARRANTY PERIOD AS SET FORTH ABOVE. THE COMPANY'S MAXIMUM LIABILITY HEREUNDER IS LIMITED TO THE PURCHASE PRICE OF THE PRODUCT. IN NO EVENT SHALL THE COMPANY BE LIABLE FOR ANY CONSEQUENTIAL, INDIRECT, INCIDENTAL OR SPECIAL DAMAGES OF ANY NATURE ARISING FROM THE SALE OR USE OF THIS PRODUCT, WHETHER IN CONTRACT, TORT, STRICT LIABILITY OR OTHERWISE. THIS LIMITED WARRANTY IS IN LIEU OF ALL OTHER WARRANTIES, EXPRESSED OR IMPLIED, INCLUDING THE IMPLIED WARRANTIES OF FITNESS AND MERCHANTABILITY. THERE ARE NO WARRANTIES WHICH EXTEND BEYOND THE DESCRIPTION ON THE FACE HEREOF.



Please visit our website
www.inoxproducts.com
for more technical and new product information.



Unison Hardware, Inc.

6 Wayne Court, Sacramento, CA 95829, USA

Tel: +1.916.388.1888 Fax: +1.916.388.8322

Email: info@unisonhardware.com