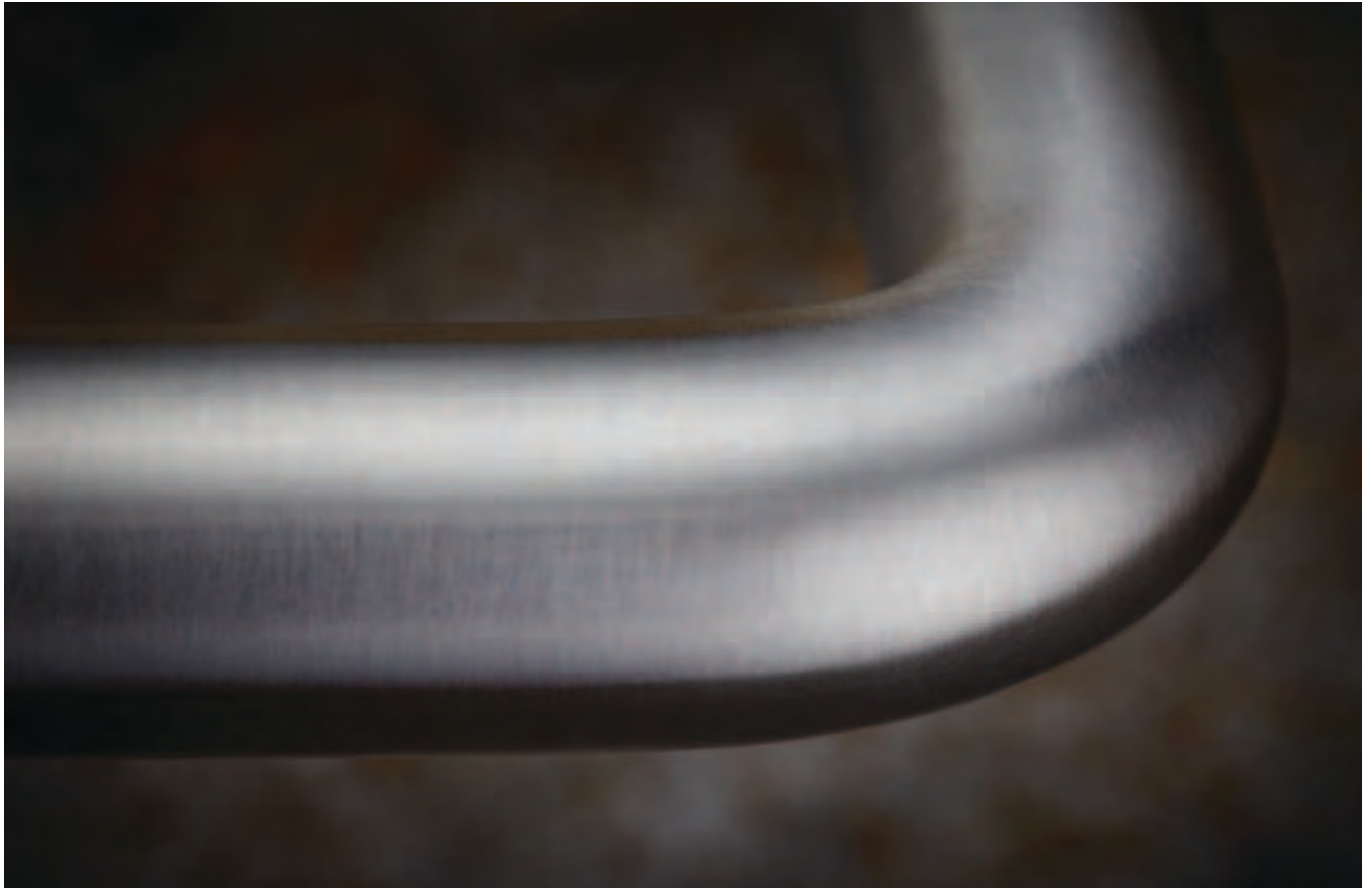




modric 



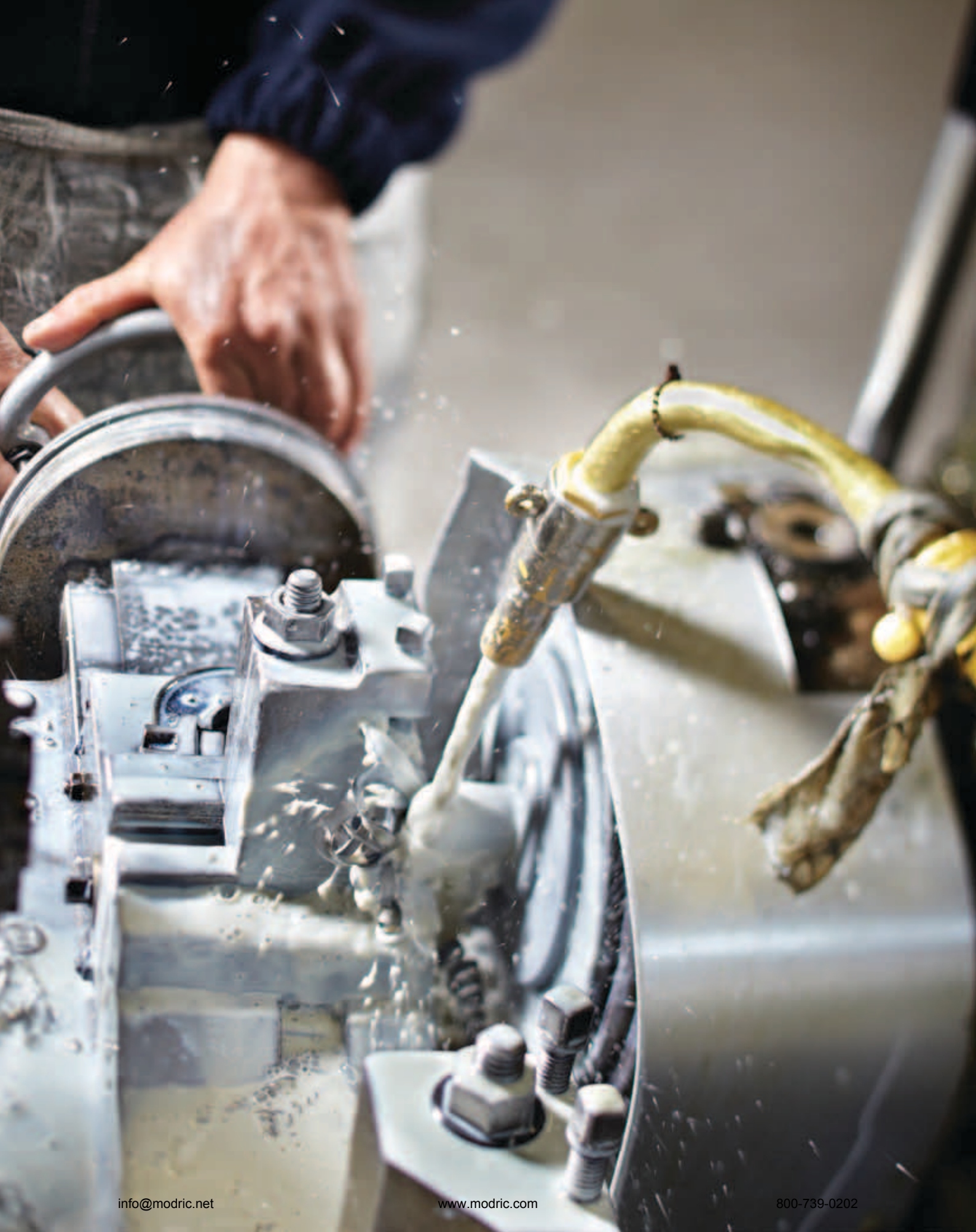
MODRIC THE BRITISH DESIGN CLASSIC

Modric was the original. The first ironmongery range with a uniform aesthetic across a co-ordinated range. Providing a consistent faultless finish, modric changed the industry as we knew it. As design and technology has advanced, modric has remained at the forefront of product innovation. Today, modric represents a timeless design classic both designed and made in Britain. In these times of increasing globalisation, you can be certain that modric has not travelled the globe to land at your project. Manufactured in our own factory by craftsmen who are both passionate and proud to be associated with modric and exactly what it stands for.

Truly iconic British design and manufacturing.









GUARANTEED DURABILITY

Allgood has built its reputation by supplying high quality products designed to last. Modric remains true to these principles. Take the lever handle for instance. Solid grade 316 stainless steel bar provides the highest level of corrosion resistance, providing material performance for years to come. Operating on the truly unique Quadaxial fixing rose, the modric lever handles have been independently tested to BS EN 1906 proving the pedigree of the most durable fixing on the market today.









PRECISION ENGINEERING

The design quality of the modric range is the result of utilising the finest grade steel bar combined with the highest level of attention to detail. Using our own custom engineered tools, our UK based manufacturing plant fabricates modric to the very finest of tolerances.





HAND FINISHED

Our polishers take great pride in their work. It takes years of experience to become qualified and only the most skilled graduate to polishing modric. Combining the finest level of satin finish with the attention to detail that only a specialist hand polisher can achieve, ensures that the quality of the modric finish cannot be surpassed.







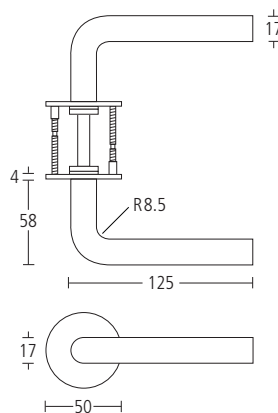


SS3508

MODRIC LEVER HANDLES ON QUADAXIAL FIXING ROSES

- Solid grade 316 satin stainless steel
- Hand finished
- Independently tested to BS EN 1906

4 7 - 1 1 4 0 U

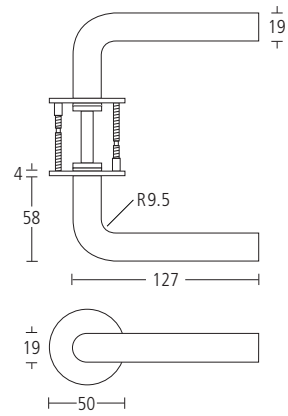


SS3509

MODRIC LEVER HANDLES ON QUADAXIAL FIXING ROSES

- Solid grade 316 satin stainless steel
- Hand finished
- Independently tested to BS EN 1906

4 7 - 1 1 4 0 U

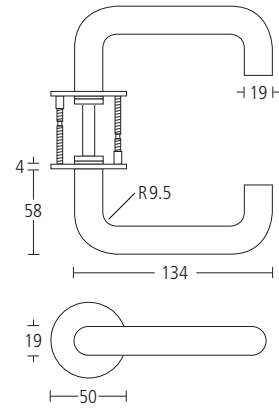




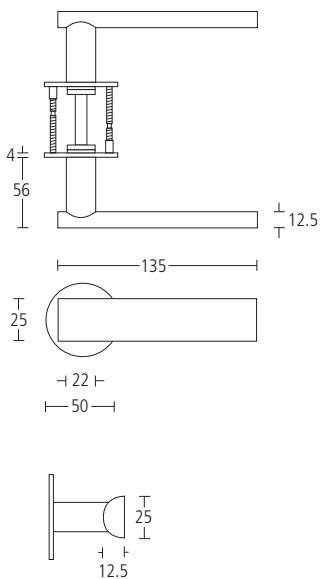
SS3510 MODRIC LEVER HANDLES ON QUADAXIAL FIXING ROSES

- Solid grade 316 satin stainless steel
- Hand finished
- Independently tested to BS EN 1906

4 7 - 1 1 4 0 U



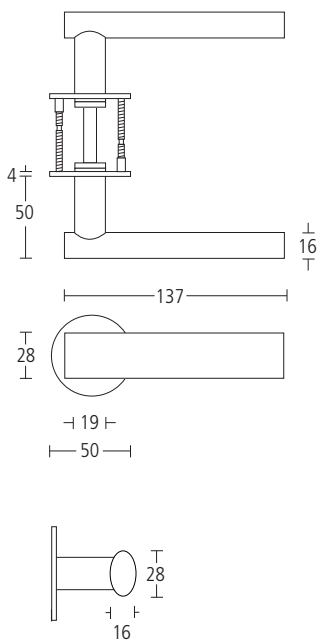




SS3520 MODRIC LEVER HANDLES ON QUADAXIAL FIXING ROSES

- Solid grade 316 satin stainless steel
- Hand finished
- Independently tested to BS EN 1906

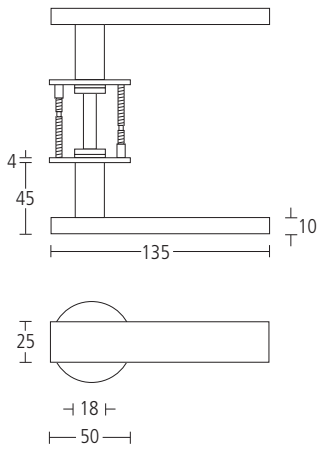
4	7	-	1	1	4	0	U
---	---	---	---	---	---	---	---



**SS3530
MODRIC LEVER HANDLES ON
QUADAXIAL FIXING ROSES**

- Solid grade 316 satin stainless steel
- Hand finished
- Independently tested to BS EN 1906

4 | 7 | - | 1 | 1 | 4 | 0 | U

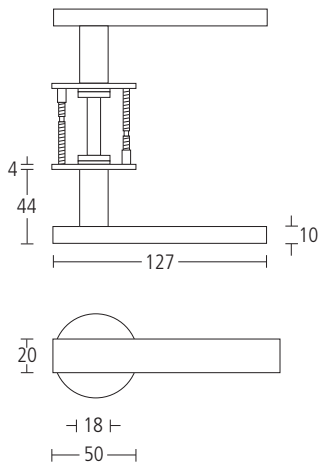


SS3540
MODRIC LEVER HANDLES ON
QUADAXIAL FIXING ROSES

- Solid grade 316 satin stainless steel
- Hand finished
- Independently tested to BS EN 1906

4 | 7 | - | 1 | 1 | 4 | 0 | U



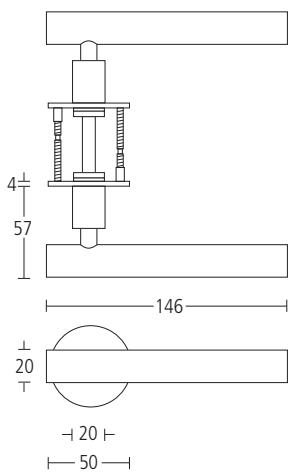


SS3545
MODRIC LEVER HANDLES ON
QUADAXIAL FIXING ROSES

- Solid grade 316 satin stainless steel
- Hand finished
- Independently tested to BS EN 1906

4 | 7 | - | 1 | 1 | 4 | 0 | U

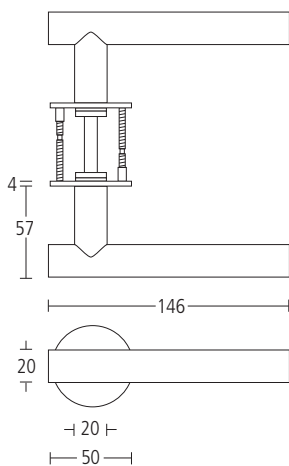




**SS3550
MODRIC LEVER HANDLES ON
QUADAXIAL FIXING ROSES**

- Solid grade 316 satin stainless steel
- Hand finished
- Independently tested to BS EN 1906

4 | 7 | - | 1 | 1 | 4 | 0 | U



SS3560
MODRIC LEVER HANDLES ON
QUADAXIAL FIXING ROSES

- Solid grade 316 satin stainless steel
- Hand finished
- Independently tested to BS EN 1906

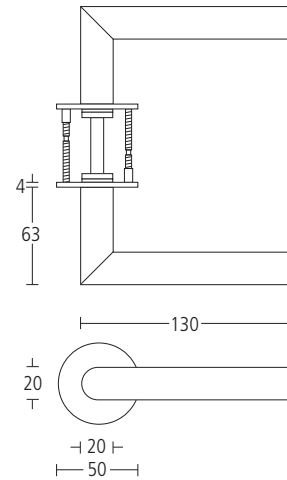
4 | 7 | - | 1 | 1 | 4 | 0 | U

SS3570

MODRIC LEVER HANDLES ON QUADAXIAL FIXING ROSES

- Solid grade 316 satin stainless steel
- Hand finished
- Independently tested to BS EN 1906

4 7 - 1 1 4 0 U







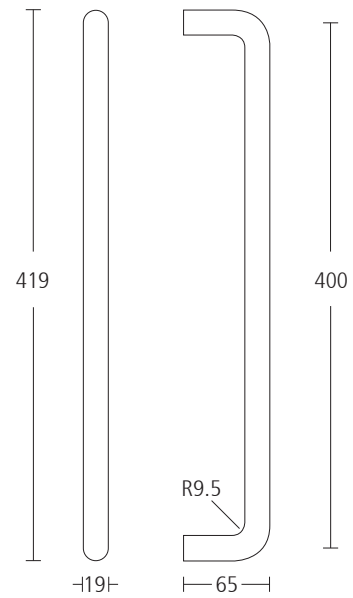


SS6598
MODRIC PULL HANDLE
400MM CENTRES

- Bolt through fixing
- Solid grade 316 satin stainless steel
- Hand finished

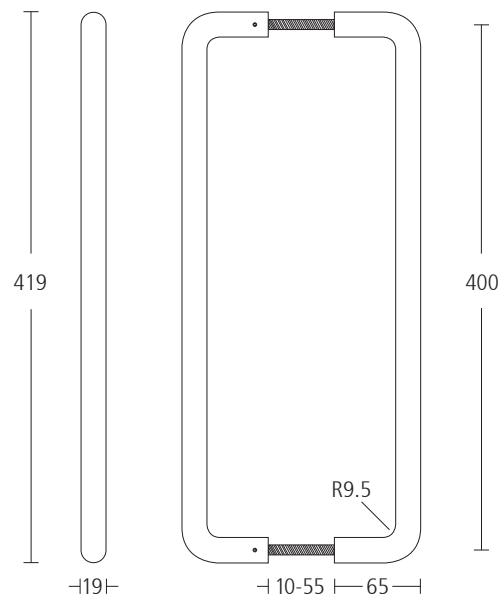
SS6598SFF
MODRIC PULL HANDLE
400MM CENTRES

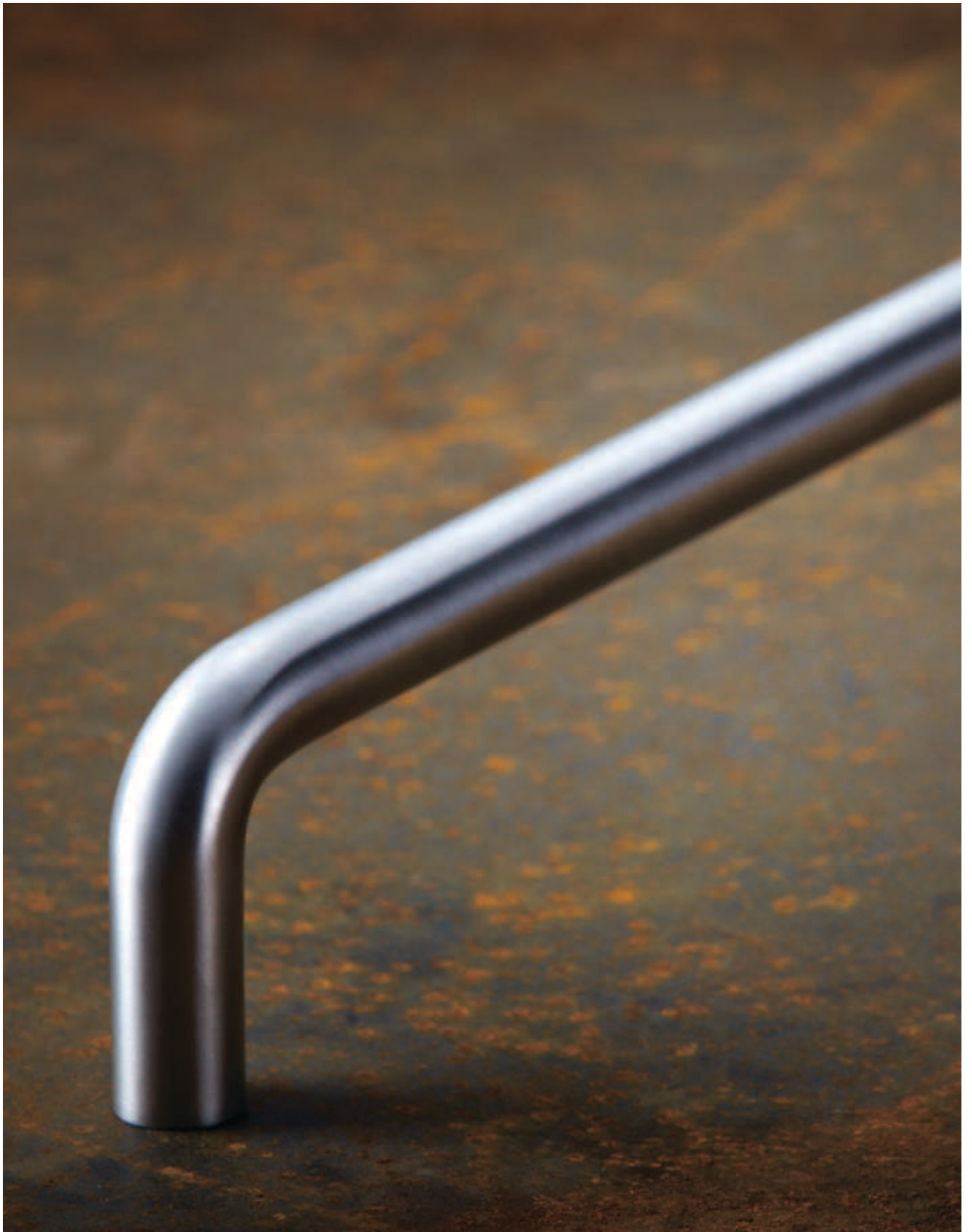
- Secret face fixing
- Solid grade 316 satin stainless steel
- Hand finished



SS6598BB
MODRIC PULL HANDLES
400MM CENTRES

- Back to back fixing suitable for timber or glass doors
- Solid grade 316 satin stainless steel
- Hand finished

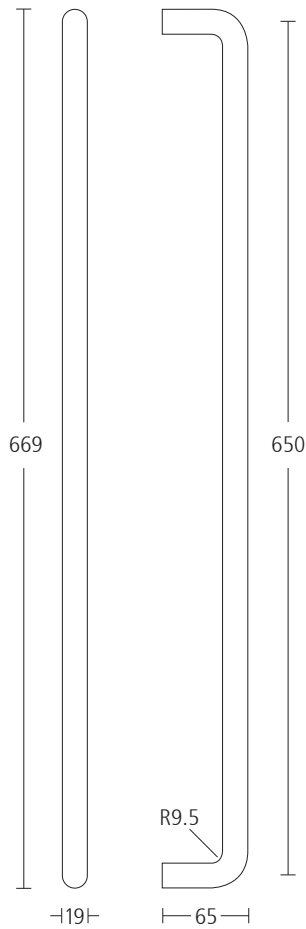




SS6599

MODRIC PULL HANDLE 650MM CENTRES

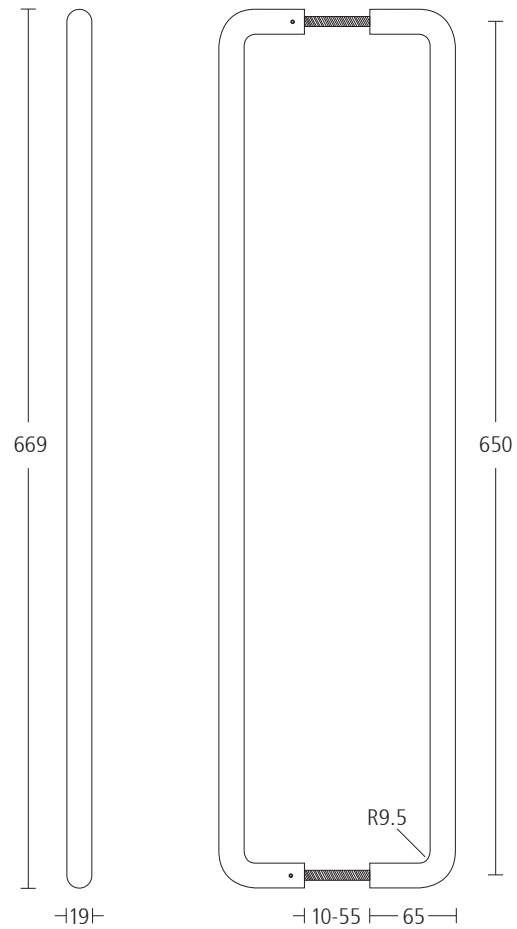
- Bolt through fixing
- Solid grade 316 satin stainless steel
- Hand finished



SS6599BB

MODRIC PULL HANDLES 650MM CENTRES

- Back to back fixing suitable for timber or glass doors
- Solid grade 316 satin stainless steel
- Hand finished



SS6599SFF

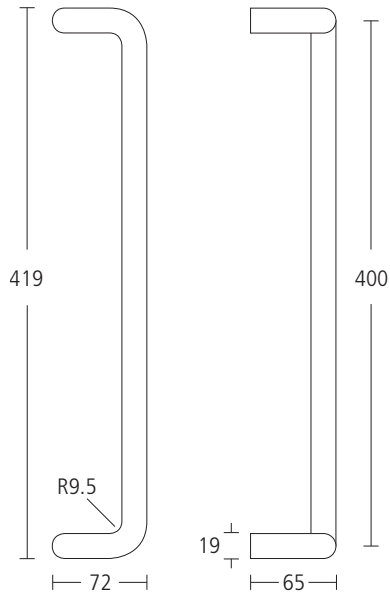
MODRIC PULL HANDLE 650MM CENTRES

- Secret face fixing
- Solid grade 316 satin stainless steel
- Hand finished

SS6598C

MODRIC CRANKED PULL HANDLE 400MM CENTRES

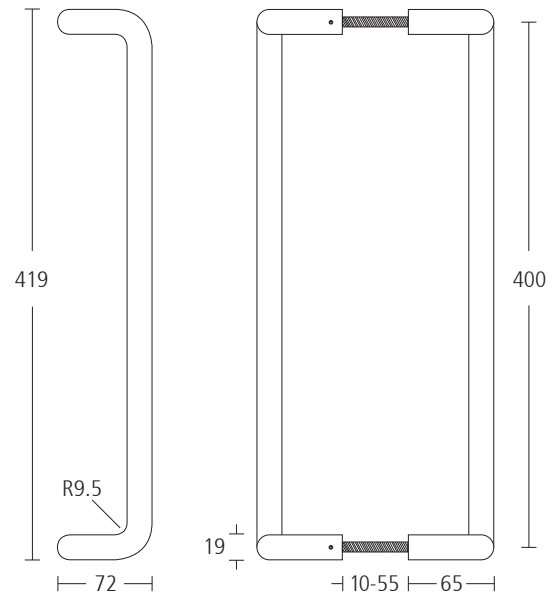
- Bolt through fixing
- Solid grade 316 satin stainless steel
- Hand finished



SS6598CBB

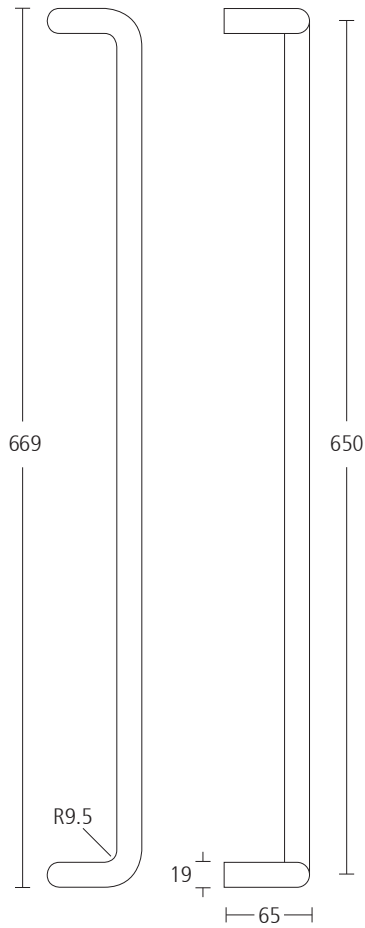
MODRIC CRANKED PULL HANDLES 400MM CENTRES

- Back to back fixing suitable for timber or glass doors
- Solid grade 316 satin stainless steel
- Hand finished



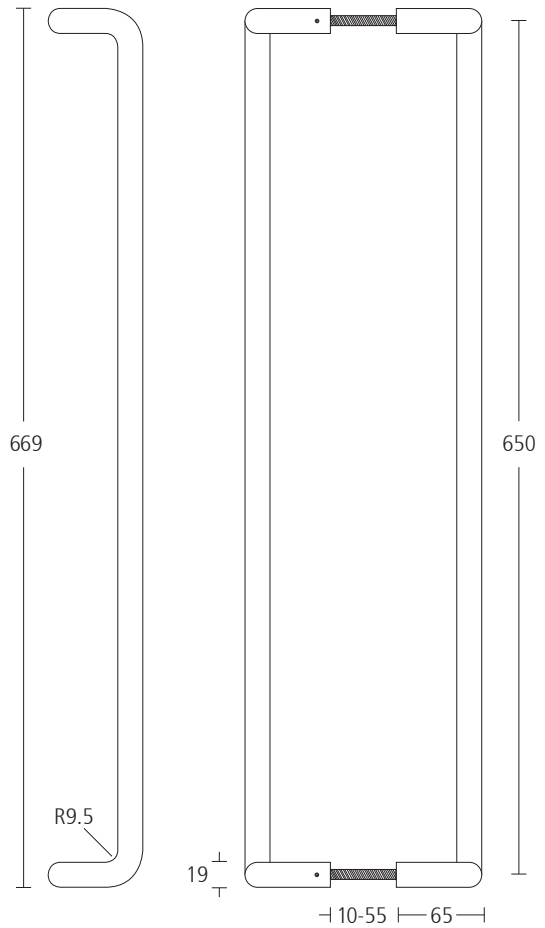
SS6599C
MODRIC CRANKED PULL HANDLE
650MM CENTRES

- Bolt through fixing
- Solid grade 316 satin stainless steel
- Hand finished



SS6599CBB
MODRIC CRANKED PULL HANDLES
650MM CENTRES

- Back to back fixing suitable for timber or glass doors
- Solid grade 316 satin stainless steel
- Hand finished









SS1720
MODRIC PULL HANDLE
400MM CENTRES

- Bolt through fixing
- Grade 316 satin stainless steel
- Hand finished

SS1720BB

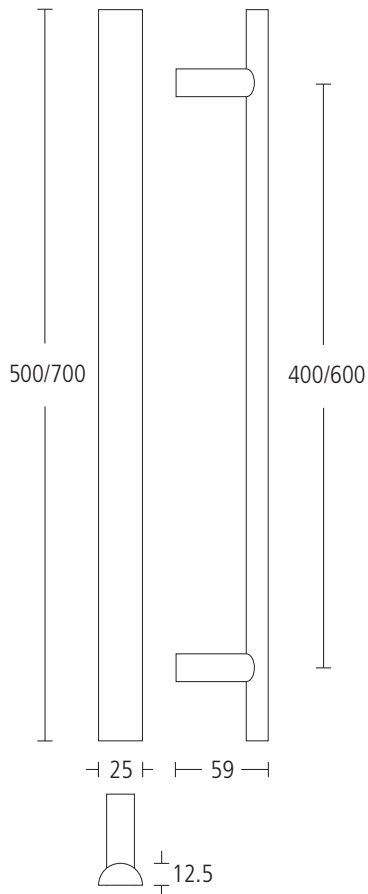
Pair, as above, with back to back fixing suitable for timber or glass doors

SS1721
MODRIC PULL HANDLE
600MM CENTRES

- Bolt through fixing
- Grade 316 satin stainless steel
- Hand finished

SS1721BB

Pair, as above, with back to back fixing suitable for timber or glass doors





SS1730
MODRIC PULL HANDLE
400MM CENTRES

- Bolt through fixing
- Grade 316 satin stainless steel
- Hand finished

SS1730BB

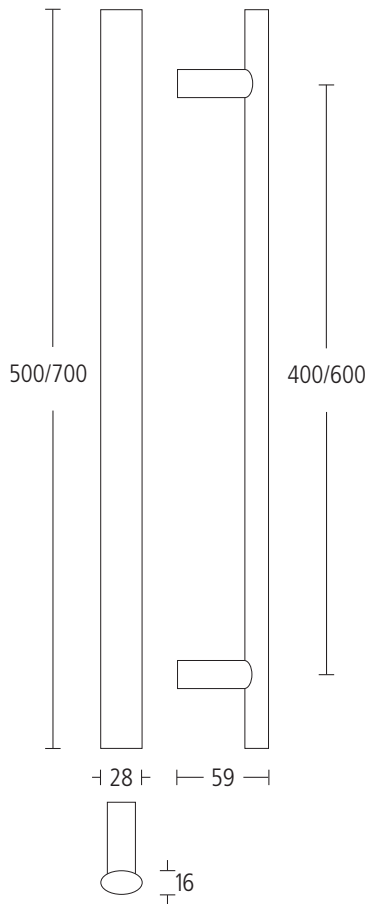
Pair, as above, with back to back fixing suitable for timber or glass doors

SS1731
MODRIC PULL HANDLE
600MM CENTRES

- Bolt through fixing
- Grade 316 satin stainless steel
- Hand finished

SS1731BB

Pair, as above, with back to back fixing suitable for timber or glass doors





**SS1740
MODRIC PULL HANDLE
400MM CENTRES**

- Bolt through fixing
- Grade 316 satin stainless steel
- Hand finished

SS1740BB

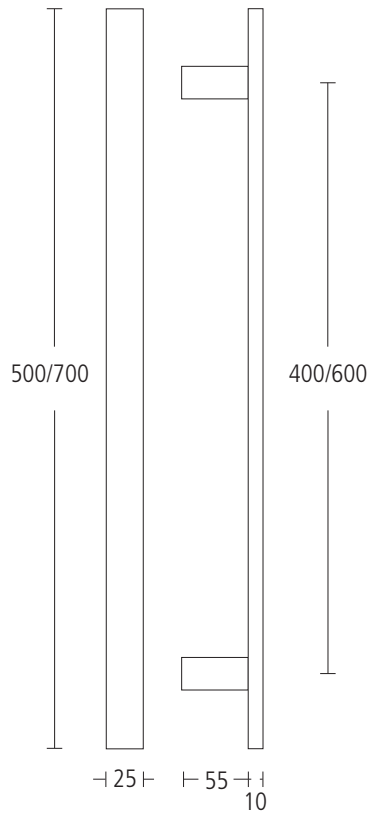
Pair, as above, with back to back fixing suitable for timber or glass doors

**SS1741
MODRIC PULL HANDLE
600MM CENTRES**

- Bolt through fixing
- Grade 316 satin stainless steel
- Hand finished

SS1741BB

Pair, as above, with back to back fixing suitable for timber or glass doors





SS1745
MODRIC PULL HANDLE
400MM CENTRES

- Bolt through fixing
- Grade 316 satin stainless steel
- Hand finished

SS1745BB

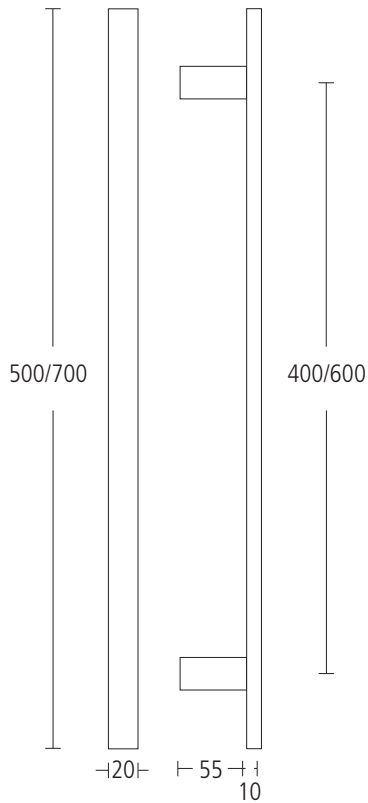
Pair, as above, with back to back fixing suitable for timber or glass doors

SS1746
MODRIC PULL HANDLE
600MM CENTRES

- Bolt through fixing
- Grade 316 satin stainless steel
- Hand finished

SS1746BB

Pair, as above, with back to back fixing suitable for timber or glass doors





**SS1750
MODRIC PULL HANDLE
400MM CENTRES**

- Bolt through fixing
- Grade 316 satin stainless steel
- Hand finished

SS1750BB

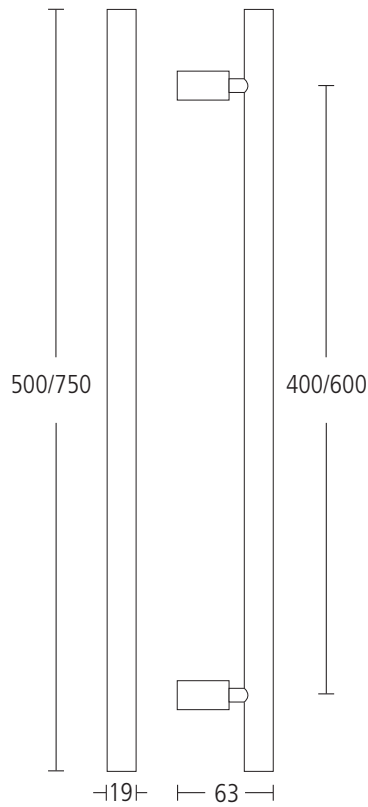
Pair, as above, with back to back fixing suitable for timber or glass doors

**SS1751
MODRIC PULL HANDLE
600MM CENTRES**

- Bolt through fixing
- Grade 316 satin stainless steel
- Hand finished

SS1751BB

Pair, as above, with back to back fixing suitable for timber or glass doors





SS1760
MODRIC PULL HANDLE
400MM CENTRES

- Bolt through fixing
- Grade 316 satin stainless steel
- Hand finished

SS1760BB

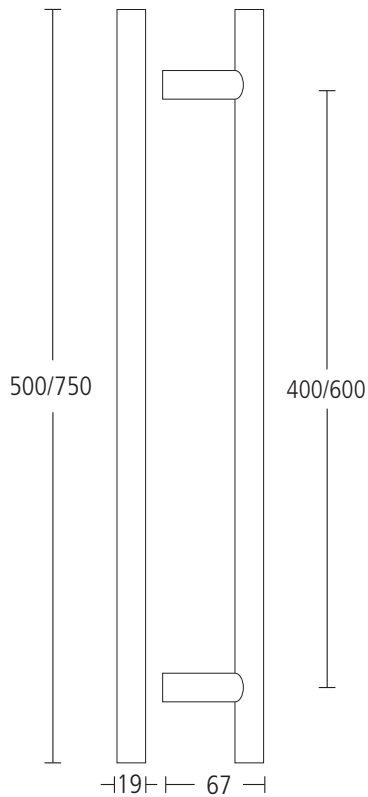
Pair, as above, with back to back fixing suitable for timber or glass doors

SS1761
MODRIC PULL HANDLE
600MM CENTRES

- Bolt through fixing
- Grade 316 satin stainless steel
- Hand finished

SS1761BB

Pair, as above, with back to back fixing suitable for timber or glass doors





SS1770
MODRIC PULL HANDLE
400MM CENTRES

- Bolt through fixing
- Grade 316 satin stainless steel
- Hand finished

SS1770BB

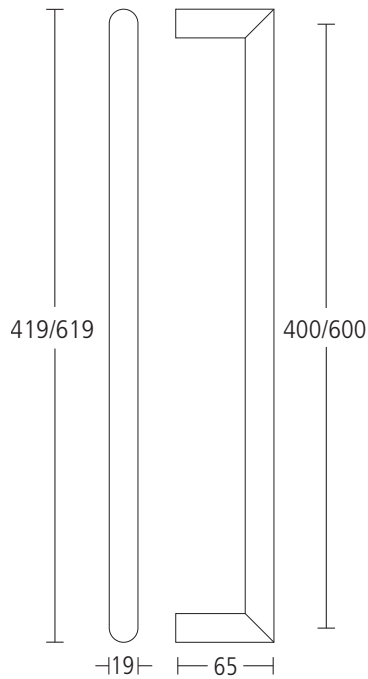
Pair, as above, with back to back fixing suitable for timber or glass doors

SS1771
MODRIC PULL HANDLE
600MM CENTRES

- Bolt through fixing
- Grade 316 satin stainless steel
- Hand finished

SS1771BB

Pair, as above, with back to back fixing suitable for timber or glass doors







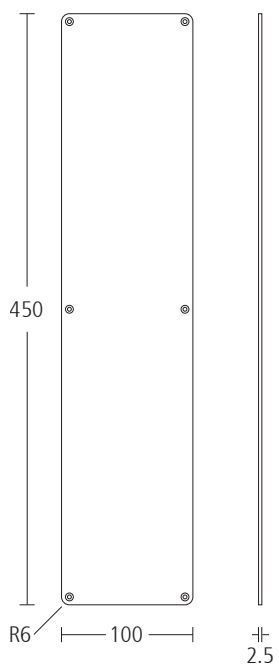


SS6802G

MODRIC RADIUS PUSH PLATE

450MM X 100MM X 2.5MM

- Torx screw fixing
- Grade 316 satin stainless steel
- Hand finished

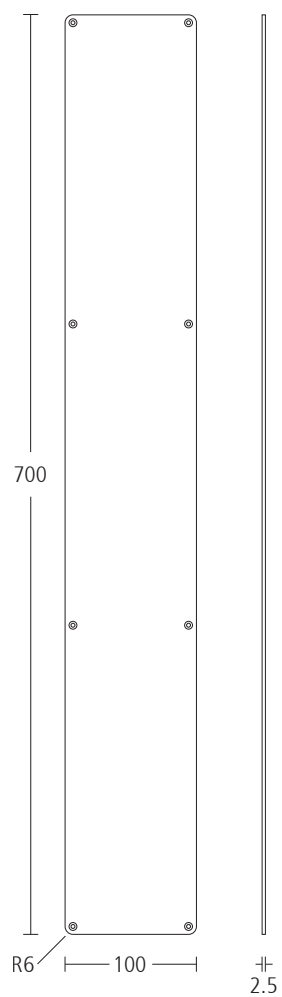


SS6802K

MODRIC RADIUS PUSH PLATE

700MM X 100MM X 2.5MM

- Torx screw fixing
- Grade 316 satin stainless steel
- Hand finished







SS9281/6

MODRIC UNIVERSAL CLOSING OVERHEAD DOOR CLOSER

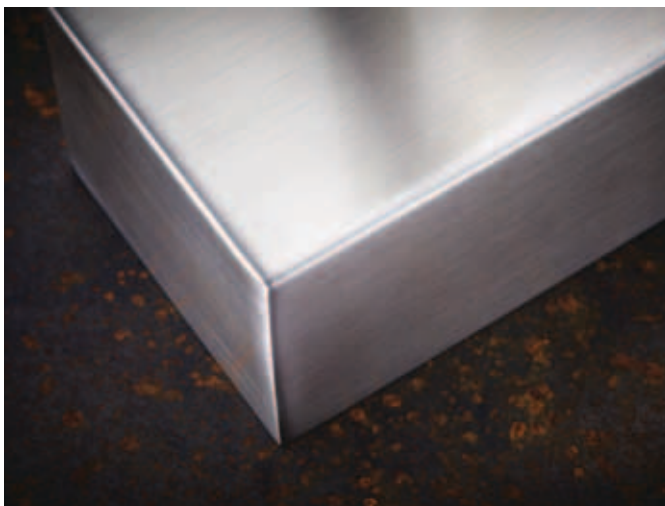
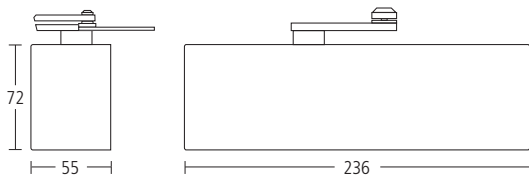
- Universal fixing (Fig 1 and Fig 6)
- Adjustable power 2-4 (Fig 1) and 1-3 (Fig 6)
- Adjustable closing speed with independent latch action
- Adjustable backcheck between angle of operation, 65°–180°
- Maximum door weight: 80kg (Fig1) / 60kg (Fig 6)
- Maximum door width: 1100mm (Fig 1) / 950mm (Fig 6)
- Independently tested to BS EN 1154

4	8	4	2	1	1	4
---	---	---	---	---	---	---

 (Fig 1)
- Independently tested to BS EN 1154

4	8	3	1	1	1	4
---	---	---	---	---	---	---

 (Fig 6)
- CE marked 0672-CPD-0225
- Certifire approved CF704
- Incorporated in successful fire tests and assessed to BS EN 1634-1 and BS 476 Pt 22 up to 120 minutes on timber doors and 240 minutes on metal doors
- 10 year guarantee



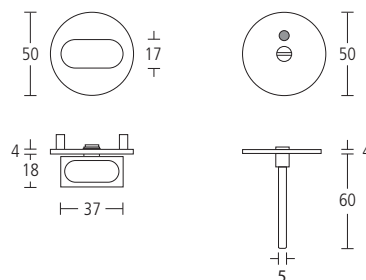






SS771Q2529
MODRIC WC TURN WITH
INDICATOR RELEASE

- Grade 316 satin stainless steel
- Hand finished
- Concealed fixing

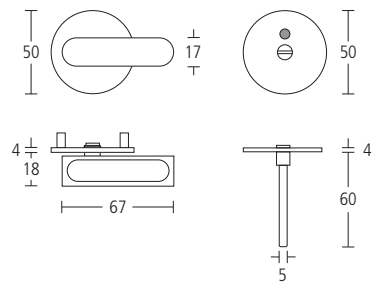






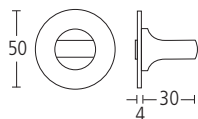
SS771Q2530
MODRIC DISABLED WC TURN
WITH INDICATOR RELEASE

- Grade 316 satin stainless steel
- Hand finished
- Concealed fixing



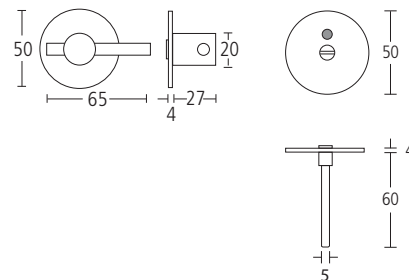
SS771Q2531
MODRIC WC TURN

- Grade 316 satin stainless steel
- Hand finished
- Concealed fixing



SS13010
MODRIC WC TURN WITH
INDICATOR RELEASE

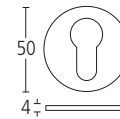
- Grade 316 satin stainless steel
- Hand finished
- Concealed fixing





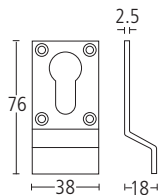
SS796Q
MODRIC EURO PROFILE
CYLINDER ESCUTCHEON

- Grade 316 satin stainless steel
- Hand finished
- Concealed fixing



SS8
MODRIC EURO PROFILE
CYLINDER PULL

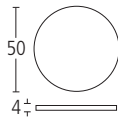
- Grade 316 satin stainless steel
- Hand finished
- Torx screw fixing





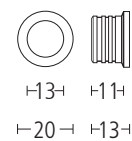
SS761Q
MODRIC BLANKING ROSE

- Grade 316 satin stainless steel
- Hand finished
- Concealed fixing



XX98580
MODRIC BUDGET LOCK ESCUTCHEON

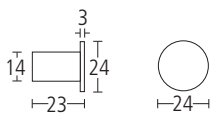
- Grade 316 satin stainless steel
- Hand finished





SS6540
MODRIC COAT HOOK

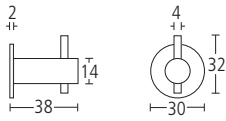
- Grade 316 satin stainless steel
- Hand finished
- Concealed fixing



SS6541

MODRIC COAT HOOK

- Grade 316 satin stainless steel
- Hand finished
- Concealed fixing

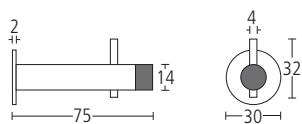




SS6542

MODRIC BUFFERED COAT HOOK

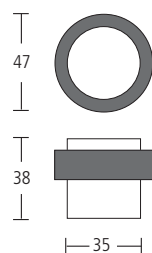
- Grade 316 satin stainless steel
- Hand finished
- Concealed fixing



SS2301

MODRIC DOOR STOP

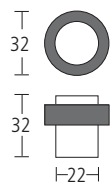
- Grade 316 satin stainless steel
- Hand finished
- Concealed fixing



SS2302

MODRIC DOOR STOP

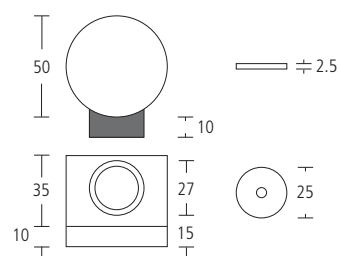
- Grade 316 satin stainless steel
- Hand finished
- Concealed fixing



SS2304

MODRIC MAGNETIC DOOR HOLDER

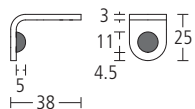
- Grade 316 satin stainless steel
- Hand finished
- Concealed fixing



SS2309

MODRIC ANGLE DOOR STOP

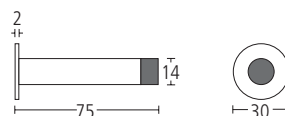
- Grade 316 satin stainless steel
- Hand finished
- Torx screw fixing



SS2315

MODRIC SKIRTING BUFFER

- Grade 316 satin stainless steel
- Hand finished
- Concealed fixing









**SS2540
MODRIC CABINET
PULL HANDLE**

- Grade 316 satin stainless steel
- Hand finished
- Bolt through fixing

**SS2541
MODRIC CABINET
PULL HANDLE**

- Grade 316 satin stainless steel
- Hand finished
- Bolt through fixing

**SS2542
MODRIC CABINET
PULL HANDLE**

- Grade 316 satin stainless steel
- Hand finished
- Bolt through fixing

**SS2543
MODRIC CABINET
PULL HANDLE**

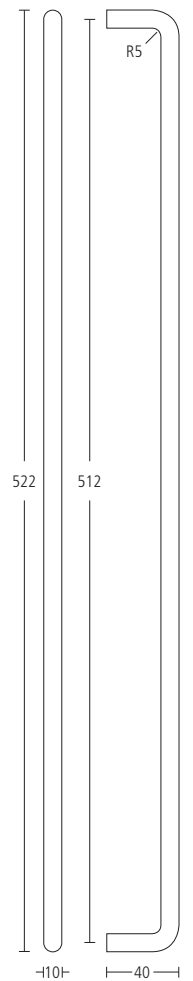
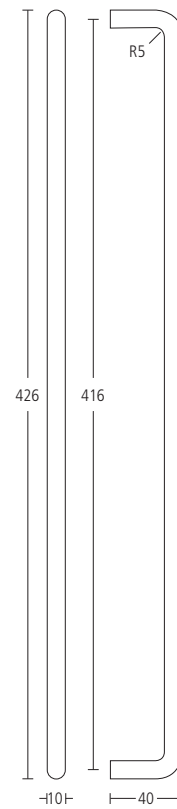
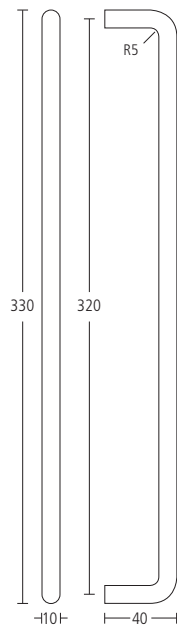
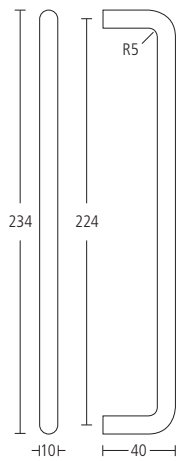
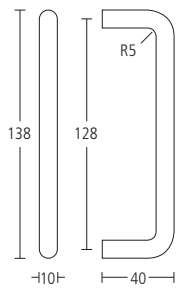
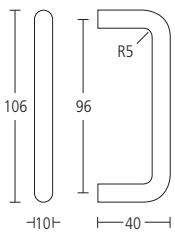
- Grade 316 satin stainless steel
- Hand finished
- Bolt through fixing

**SS2544
MODRIC CABINET
PULL HANDLE**

- Grade 316 satin stainless steel
- Hand finished
- Bolt through fixing

**SS2545
MODRIC CABINET
PULL HANDLE**

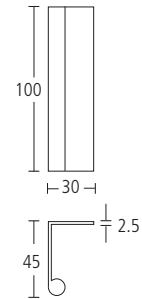
- Grade 316 satin stainless steel
- Hand finished
- Bolt through fixing





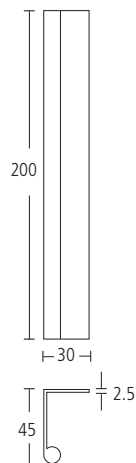
XX1714/1S
MODRIC 'LEDGE' PULL HANDLE
100MM X 45MM

- Simulated satin stainless steel
- Hand finished



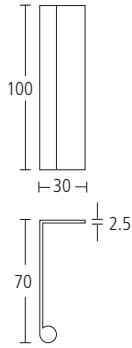
XX1714/2S
MODRIC 'LEDGE' PULL HANDLE
200MM X 45MM

- Simulated satin stainless steel
- Hand finished



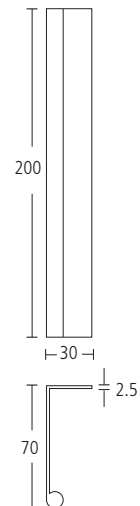
XX1716/1S
MODRIC 'LEDGE' PULL HANDLE
100MM X 70MM

- Simulated satin stainless steel
- Hand finished



XX1716/2S
MODRIC 'LEDGE' PULL HANDLE
200MM X 70MM

- Simulated satin stainless steel
- Hand finished



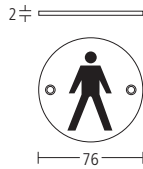




SS8432

MODRIC 'MALE' SIGN

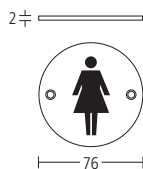
- Grade 316 satin stainless steel
- Torx screw fixing
- Hand finished



SS8433

MODRIC 'FEMALE' SIGN

- Grade 316 satin stainless steel
- Torx screw fixing
- Hand finished



SS8434

MODRIC 'UNISEX' SIGN

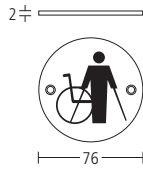
- Grade 316 satin stainless steel
- Torx screw fixing
- Hand finished



SS8435

MODRIC 'DISABLED' SIGN

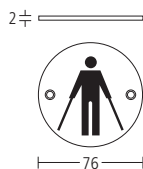
- Grade 316 satin stainless steel
- Torx screw fixing
- Hand finished



SS8436

MODRIC 'AMBULANT' SIGN

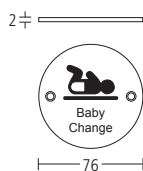
- Grade 316 satin stainless steel
- Torx screw fixing
- Hand finished



SS8457

MODRIC 'BABY CHANGE' SIGN

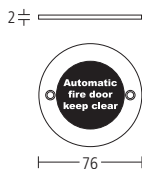
- Grade 316 satin stainless steel
- Torx screw fixing
- Hand finished



SS8447

MODRIC 'AUTOMATIC FIRE DOOR KEEP CLEAR' SIGN

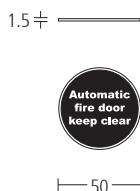
- Grade 316 satin stainless steel
- Torx screw fixing
- Hand finished
- Adheres to safety sign legislation BS 5499



SS8447S

MODRIC 'AUTOMATIC FIRE DOOR KEEP CLEAR' SIGN

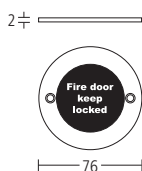
- Grade 316 satin stainless steel
- Self adhesive
- Hand finished
- Adheres to safety sign legislation BS 5499



SS8448

MODRIC 'FIRE DOOR KEEP LOCKED' SIGN

- Grade 316 satin stainless steel
- Torx screw fixing
- Hand finished
- Adheres to safety sign legislation BS 5499



SS8448S

MODRIC 'FIRE DOOR KEEP LOCKED' SIGN

- Grade 316 satin stainless steel
- Self adhesive
- Hand finished
- Adheres to safety sign legislation BS 5499

1.5 ±



50



SS8449

MODRIC 'FIRE DOOR KEEP SHUT' SIGN

- Grade 316 satin stainless steel
- Torx screw fixing
- Hand finished
- Adheres to safety sign legislation BS 5499

2 ±



76



SS8449S

MODRIC 'FIRE DOOR KEEP SHUT' SIGN

- Grade 316 satin stainless steel
- Self adhesive
- Hand finished
- Adheres to safety sign legislation BS 5499

1.5 ±



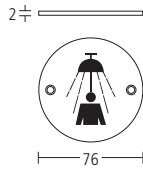
50



SS8456

MODRIC 'SHOWER' SIGN

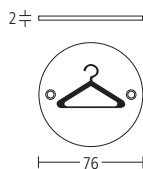
- Grade 316 satin stainless steel
- Torx screw fixing
- Hand finished



SS8458

MODRIC 'CLOAKROOM' SIGN

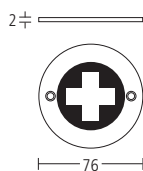
- Grade 316 satin stainless steel
- Torx screw fixing
- Hand finished



SS8459

MODRIC 'FIRST AID' SIGN

- Grade 316 satin stainless steel
- Torx screw fixing
- Hand finished





modric

Allgood would like to thank Cloud 9 Digital Design Ltd. (www.c9dd.com) for their contribution to this brochure.

All information and details in this brochure are correct at time of going to press. However, Allgood plc reserves the right to change the product specifications without notice.

All dimensions are subject to production tolerances of $\pm 1\text{mm}$.

@lgood and **modric** are registered trademarks.

© Allgood plc 2012

Proud distributors of Modric for 26 years

modric Inc,
National Headquarters for North America,
P.O.Box 1639
Arboles
Colorado 81121
t. 800-739-0202
f. 800-813-2128
e. info@modric.net